

Setup Guide

Data Acquisition for TOS5300 Ver.1.x

For Safe Use

Before using this software application, thoroughly read the Manual of the Withstanding Voltage and Insulation Resistance Tester, and be sure to connect and operate the product correctly. Incorrect connection or operation can lead to serious accidents, such as a potentially fatal electric shock.

Kikusui Withstanding Voltage and Insulation Resistance Testers provides many features to protect its operators, but while the tester is in use, high voltage is applied to the EUT. Inadvertently touching the EUT, test lead, probe, components near the output terminal, and the like, can cause electric shock.

Provide safety measures around the tester and EUT, such as a fence to keep people away. Practice and maintain strict adherence to safety procedures.

General Description

Data Acquisition for TOS5300 (hereafter referred to as DAQ for TOS5300) is a software application for retrieving test data from Kikusui Withstanding Voltage and Insulation Resistance Testers. Retrieved data is stored in a dedicated database and can be easily managed.

Applicable Withstanding Voltage and Insulation Resistance Testers

- AC Withstanding Voltage Tester TOS5300
- AC/DC Withstanding Voltage Tester TOS5301
- AC Withstanding Voltage and Insulation Resistance Tester TOS5302

Main features

- Run and stop feature
- Auto serial number incrementation
- Data item sorting
- Searching
- Printing (print item selection)
- Tab-separated text file output (UTF-8)

System requirements

To use DAQ for TOS5300, you need the following hardware and software.

- A PC with Microsoft Windows 7, Windows 8 or Windows 10
- Microsoft .NET Framework 4.0
- 2 GB or more of RAM (4 GB or more recommended)
- 1024×768 dots or higher resolution
- 100 MB or more of free hard disk space (additional space is required to save data)
- CD-ROM drive
- Mouse or other pointing device
- VISA driver NI-VISA 5.0.3 or later, Keysight IO Libraries Suite 16.1 or later, or KI-VISA 5.0.5 or later
- USB cable

■ Applicable the tester firmware version

Data Acquisition for TOS5300 can be used with testers with following firmware version.

- TOS5300/5301/5302: Ver.1.22 and later

The firmware version is displayed when the tester starts. If the firmware is earlier than above version, it must be updated.

VISA Driver

-- Note --

- VISA
VISA (Virtual Instrument Software Architecture) is a standard developed by the VXIplug&play Systems Alliance that defines software specifications for communicating with instruments from a PC.
- VISA driver
A VISA-compliant driver software.
- KI-VISA
Kikusui original VISA driver compatible with VXIplug&play VISA.

To use DAQ for TOS5300, you must install one of the following VISA drivers.

VISA driver	Version and where to obtain the driver
KI-VISA	KI-VISA version 5.0.5 or later KIKUSUI website
NI-VISA	Version 5.0.3 or later National Instruments website
Keysight IO Libraries	Suite 16.1 or later Keysight Technologies (formerly Agilent Technologies) Website

Installing KI-VISA

Notice

Do not install multiple different VISA drivers. Doing so may cause the various VISA drivers to malfunction.

If you are using NI-VISA or Keysight IO Libraries, see the manual for the corresponding product.

To proceed without installing KI-VISA, go to DAQ for TOS5300 Installation.

On a 32-bit OS, install KI-VISA_x_x_x_(x86). On a 64-bit OS, install KI-VISA_x_x_x_(x64). The string “x_x_x” indicates the version.

KI-VISA is an original VISA library developed by Kikusui Electronics Corporation that supports the IVI VISA specifications 5.0. You can download the most recent version of this library from the Kikusui Electronics Corporation website (<https://www.kikusui.co.jp/en/download/>).

DAQ for TOS5300 Installation

-- Note --

The DAQ for TOS5300 installer contains Microsoft.NET Framework 4.0, which is needed to run this software application. When the .NET Framework 4.0 installation dialog box appears during the installation, if .NET Framework 4.0 is already installed in your PC, you can click No to shorten the installation time. If you do not know whether .NET Framework 4.0 is installed, click Yes.

1 Double-click DAcqTOS5300_x_x_x_setup.exe.

Follow the instructions on the screen to install the software. When the installation is finished, “Installation Complete” will appear on the screen.

2 Click Close.

Starting DAQ for TOS5300

1 Connect the tester to the PC using a USB cable.

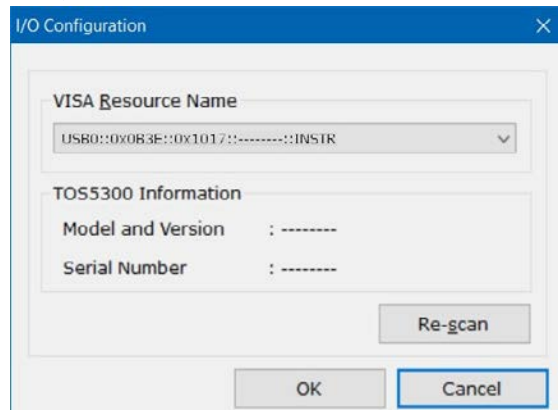
2 Turn on the tester.

3 On the taskbar, click Start, All Programs, Kikusui Data Acquisition for TOS5300, and then Data Acquisition for TOS5300.

DAQ for TOS5300 will start.

4 On the Tools menu, click I/O Configuration.

When you run DAQ for TOS5300 for the first time, you need to assign a VISA resource name to the tester.



If the device's ID string could be read

Select an ID from the list, and click **OK**.

If the device's ID string could not be read

Click **Re-scan**. If the model/version and serial number appear, click **OK**.

If the connection still cannot be established, check the cable connection and VISA setup, and restart from step 1.

KIKUSUI ELECTRONICS CORP.

1-1-3 Higashiyamata, Tsuzuki-ku, Yokohama,
224-0023, Japan

Tel: +81-45-482-6353

Fax: +81-45-482-6261

www.kikusui.co.jp/en



Company names and product names used in this manual are trademarks or registered trademarks of their respective companies.

Use this software product under the conditions provided in the “License Agreement” supplied with the installer.

© 2015