

## Sequence Creation and Control Software Setup Guide

# SD032-PCR-WE Wavy for PCR-WE Ver 6.1x

SD032-PCR-WE Wavy for PCR-WE is used to create and execute sequences for Kikusui AC power supplies shown below.

- You can create and edit sequences easily by using a mouse.
- During sequence execution, the software indicates the point being executed.
- You can monitor the voltage and current, and save the monitored data to a file.
- The software displays the monitored data as a real-time monitor graph.

### ■ Package contents

- Program CD-ROM
- SD032-PCR-WE Wavy for PCR-WE Setup Guide (this guide)

### ■ Wavy version that this guide covers

- Version 6.1x

To find out the version of the Wavy, click on the Help menu and select About Wavy.

### ■ AC power supply firmware versions that Wavy applies

- PCR-WE series and PCR-WE2 series (including the PCR-WE2R, a model with a regeneration function) with firmware version 1.42 and later.
- PCR-WEA series and PCR-WE2A series (including the PCR-WEA2R, a model with a regeneration function) with firmware version 3.10 and later.

For instructions on how to view the firmware version, see the AC power supply manual.

### ■ Trademarks

Microsoft and Windows are either registered trademarks or trademarks of Microsoft Corporation in the United States and/or other countries. All company names and product names used in this manual are generally trademarks or registered trademarks of their respective companies.

### ■ Notations Used in This Manual

- In this guide, Sequence Creation Software SD032-PCR-WE Wavy for PCR-WE is referred to as Wavy.
- “PC” in this guide is a generic term for personal computers and workstations.
- In this guide, operations on Windows 10 are described when explaining operations related to the OS.
- The following markings are used in this guide.

**NOTE** Indicates information that you should know.

- > Indicates the menu command you need to select. The menu command to the left of “>” is the higher level command.

### ■ Copyrights

The contents of this guide may not be reproduced, in whole or in part, without the prior consent of the copyright holder. The specifications of this product and the contents of this guide are subject to change without prior notice.

© 2019 KIKUSUI Electronics Corporation

## KIKUSUI ELECTRONICS CORP.

1-1-3 Higashiyamata, Tsuzuki-ku, Yokohama,  
224-0023, Japan

Tel: +81-45-482-6353

Fax: +81-45-482-6261

global.kikusui.co.jp



## Safety precautions

Before using Wavy, carefully read the AC power supply manual. Be sure to connect and handle the device properly. Improper connections or handling may lead to serious accidents, injury, and fire.

## System requirements

- A PC with core i5 or higher
- Windows 10 or Windows 11
- 4 GB RAM (Minimum)
- 10 GB or more of free hard-disk space
- A display that supports 1024 x 768 or higher resolution (96 DPI)
- CD-ROM drive
- Mouse
- RS232C, USB, LAN, or GPIB (depending on the interface to use)
- VISA library

## Windows Update

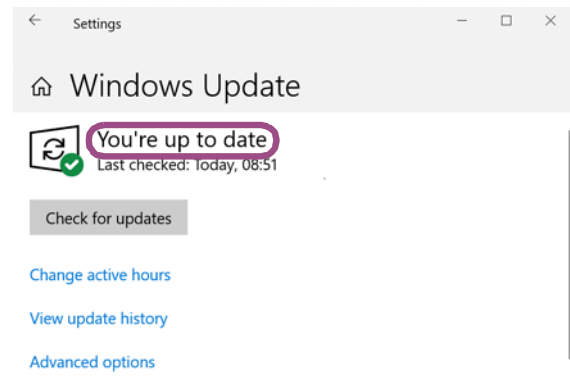
If you want to run the software stably over an extended period to conduct tests, you need to be careful about the automatic updates in Windows.

Before conducting a test, thoroughly read and make sure you understand the instructions given below to set up a highly stable OS environment as much as possible.

### ■ Running Windows Update

Run Windows Update to update the OS to the latest condition (in which “You’re up to date” is shown).

When the downloading of the update file is complete, Windows will be in an installation-wait state or restart-wait state after installation. If you attempt to start the software to conduct a test while the PC is in the above state, Windows may restart automatically even when the PC is not connected to the Internet. Be sure to select Install Now or Restart Now to complete the installation of the update program.



Example of Windows 10

### ■ Windows Update settings

With the default Windows Update settings, when connected to the Internet, Windows automatically runs Windows Update and restarts the PC using the update program. If the software is running, Windows will automatically restart even when a test is in progress, and this will result in the interruption of the test.

If you want to run the software over an extended period to conduct tests, we recommend you to reschedule installation of update program for a later date by making settings in Windows Update.

# Installation

You need to log on as an administrator to install the software applications.

Close all software applications running on your PC. The software may not be installed properly if virus protection software is running. Disable virus protection software until the installation is complete.

## Installing the VISA library

To use Wavy, VISA library needs to be installed on your PC.

VISA (Virtual Instrument Software Architecture) library is a standard specification for measurement instrument connection software, which was developed by VXIplug&play Systems Alliance.

A KIKUSUI original KI-VISA is available that supports IVI VISA specifications 5.0. You can download the latest version of this library through our website (<https://www.kikusui.co.jp/download/>).

- KI-VISA Ver 5.5 or later

The following other VISA libraries can also be used. Confirm the license terms of each VISA library before installation.

- NI-VISA by National Instruments (Ver.19.0 or later)
- Keysight VISA by Keysight Technologies (Keysight IO Libraries Suite18.1 or later)

## ■ Installing KI-VISA

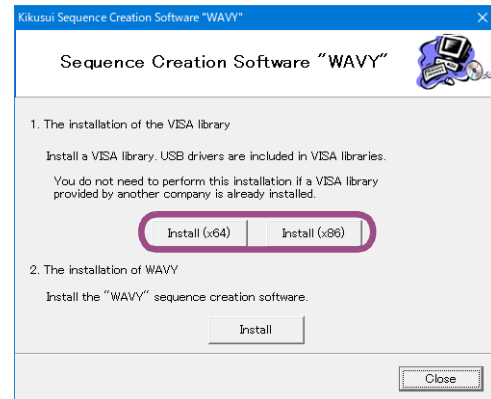
If NI-VISA or Keysight VISA is already installed on your PC, you do not need to install KI-VISA.

### 1 Insert the CD-ROM to your CD-ROM drive.

A setup window appears. Otherwise, double-click "AutoRun.exe" included in the CD-ROM.

### 2 Click Install under 1. The installation of the VISA library.

Click Install (x64) for 64-bit OS or Install (x86) for 32-bit OS.



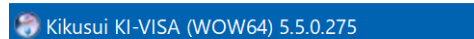
The VISA library installation initiates.

In case that a VISA library has already been installed, the VISA library and its version are displayed.

Do not install multiple VISA libraries on a single PC.

### NOTE

kivisa\_5\_5\_0(x64).exe contains two software packages, KI-VISA (x64) and KI-VISA (WOW64). When KI-VISA (x64) has been successfully installed, the installation of KI-VISA (WOW64) begins. Be sure to confirm that the installation of KI-VISA (WOW64) has finished successfully.



#### Installation Complete

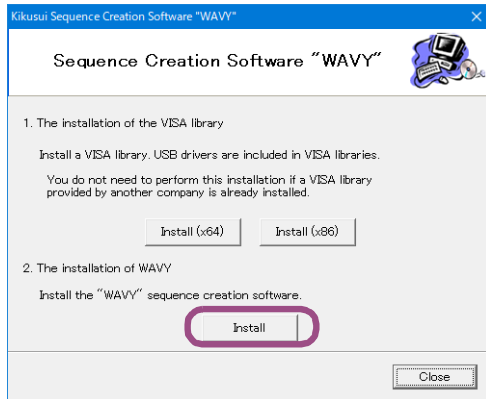
Setup was completed successfully.

## Installing Wavy

### 1 Insert the CD-ROM to your CD-ROM drive.

A setup window appears. Otherwise, double-click "AutoRun.exe" included in the CD-ROM.

### 2 Click Install under 2. The Installation of WAVY.



### 3 Follow the instructions until the installation is complete.

## Uninstalling Wavy

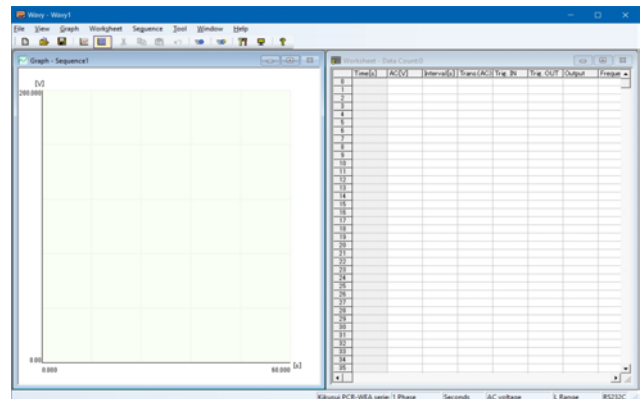
Right-click Windows Start, and select > Apps & Features > Kikusui SD032-PCR-WE > Uninstall.

## Starting Wavy

### NOTE

- Before starting Wavy, make sure that the power-saving mode and the screen saver are turned off and all the other applications are closed on your PC.
- When your PC supports either Advanced Power Management (APM) or sleep mode, turn off these functions.
- Changing the DPI setting may result in improper appearance of the display.

To start Wavy, from the Windows Start menu, select Kikusui SD032-PCR-WE > Wavy for PCR-WE.



## Viewing the User's manual

The User's manual contain information on how to use Wavy and description of interface settings.

Manual is available in two versions: HTML help and PDF

- To open the HTML help, click Help and then Help Topics.
- To open the user's manual PDF file, from the Windows Start menu, select Kikusui SD032-PCR-WE > User's Manual (English).